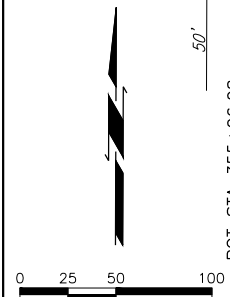
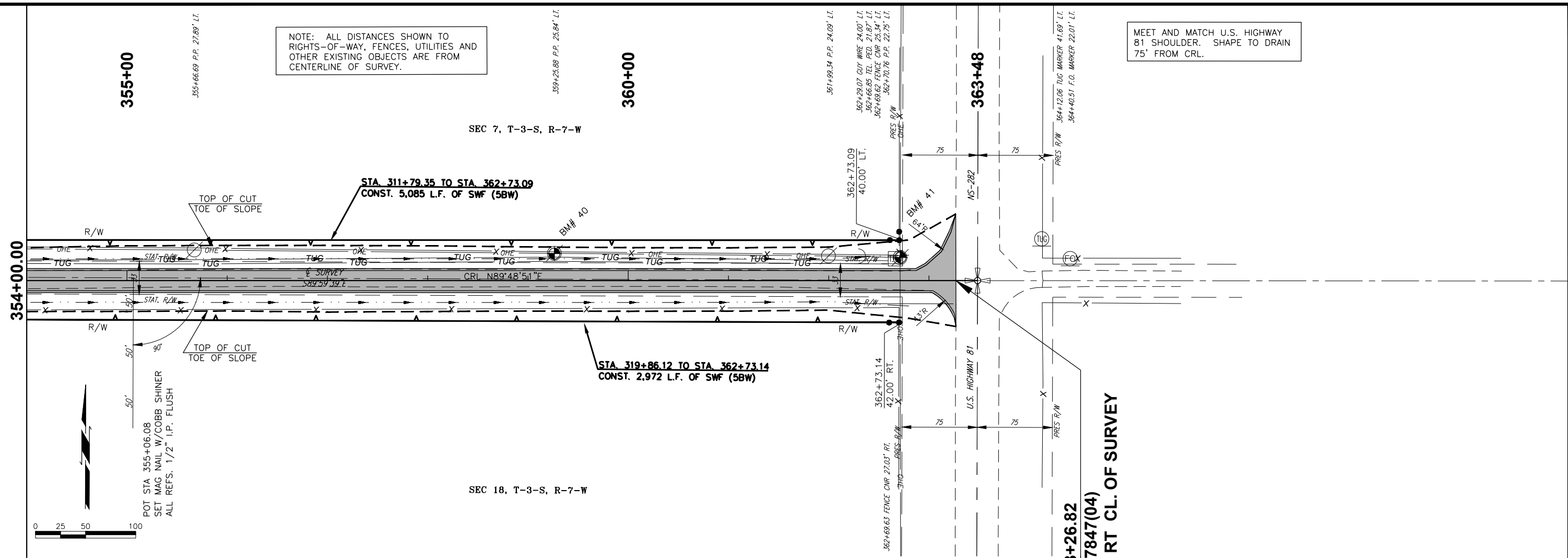


PLOT DATE: August 8, 2017, DRAWING NAME: N:\GIS\TRANSPORTATION\COUNTY\PRODUCTION\STEPHENS\12010.DWG-187,STEPHENS\PROJECT DRAWINGS\PLAN AND PROFILE 187.DWG

NOTE: ALL DISTANCES SHOWN TO RIGHTS-OF-WAY, FENCES, UTILITIES AND OTHER EXISTING OBJECTS ARE FROM CENTERLINE OF SURVEY.

MEET AND MATCH U.S. HIGHWAY 81 SHOULDER. SHAPE TO DRAIN 75' FROM CRL.



POT STA 355+06.08
SET MAG NAIL W/COBB SHINER
ALL REFS. 1/2" I.P. FLUSH

NOTE: CONTRACTORS SHALL VERIFY LOCATIONS AND DEPTHS OF ALL UTILITIES BEFORE CONSTRUCTION.

BM 40 STA 359+25.87 25.49' LT.
SET RR SPIKE S. SIDE POWERPOLE
ELEV. 994.01

BM 41 STA 362+71.10 22.91' LT.
SET RR SPIKE S. SIDE POWERPOLE
ELEV. 987.71

